



## A Changing Neighbourhood - Heart of Quadra Village to Accommodate 5-Storey "The Summit at Quadra Village"

By Carol Sokoloff

The Hillside-Quadra neighbourhood has seen many changes over the years. In the height of misguided mid-20th century city planning, residential streets such as Rose St. were demolished to make way for a freeway-like arterial, Blanshard Street, connecting the city to the Pat Bay Highway, and to build the sprawling Blanshard Court housing complex, as well as Blanshard Elementary. Through the efforts of people like the late Jane Jacobs, author of *The Death and Life of Great American Cities*, that destructive approach to 'urban renewal' was soon curtailed, yet the scars remain in almost every contemporary city including Victoria. Freeways, impersonal public housing in the middle of sterile lawns and uninspiring architecture are some of its features that many North American cities are now rectifying.

One result of demolitions in the name of urban renewal in this neighbourhood was the acquisition of a green space, the yard of Blanshard School. Unfortunately, when School District 61 closed the school and transferred the property via a 99-year lease, the community could no longer count on that green space. Now we know that this site is projected to become the home of a five-storey care facility to be built by the CRD and Island Health, to replace Oak Bay and Mount Tolmie Lodges. What effect will this development have on our Hillside-Quadra neighbourhood?

We are told the facility will house 320 elderly residents who are in need of constant care, including dementia patients. Many of these patients will be shut-in or restricted to fenced grounds, but as one community member voiced at a recent NAG meeting, they will still be residents that our community cares about. These residents will be served by a staff of up to 400 people. That infusion into the neighbourhood means the Village area is likely to be more populated most hours and local businesses may appreciate the added clientele. So far so good. But how do the staff members and visitors get to the hospital, not to mention ambulances and the trucks that deliver food and equipment? Although some staff will cycle or take the bus, with a development of this sort we can expect a significant increase in traffic on our streets.

Details about what the building will look like



Caption

and where traffic will enter and exit from are still in formation. A design team will be hired soon to design and draw plans for the building, although they will not build the project. At a recent neighbourhood association committee (NAG) meeting representatives from the CRD and Island Health suggested the community might have limited input into certain factors such as traffic options and community walkways. Councillors Ben Isitt and Jeremy Loveday, with support from Mayor Lisa Helps, have introduced a by-law amendment that could allow exit and entrance from Hillside Avenue so as not to interfere with the official bicycle route, park and playground on Kings Rd.

Leni Hoover has eloquently expressed that not only was the community losing a well-used green space but nearby residents might lose quiet, darkness, and sunrise and sunset. There is little doubt that this facility will cast a shadow in many ways. It has been given the name 'The

Summit at Quadra Village', which many at the meeting felt to be inappropriate as it is not on Summit Rd. or on any high point, although it is bound to tower over the low-rise Village. A more fitting name would be The Rose at Quadra Village, a fine way to remember a street and neighbourhood that was lost in the expansion of Blanshard Street.

When the building project was announced in November 2013 with fanfare, an excited Dean Fortin stated in the Times Colonist "I am looking forward to engaging with local residents to see the potential for amenities for the local community, recognizing full well that just getting these beds is an amenity for the region... It is my happy expectation that the CRD is always a good neighbour and we'll look forward as this moves forward into development, to look for an opportunity to reflect some amenities for the community,

(Continued on page 3)

**Open House for the Summit at Quadra Village: Complex Care Facility at 955 Hillside Ave, March 28<sup>th</sup> from 1:30-3:30 p.m. This Open House will be held in the gymnasium of CDI College (former Blanshard School) 950 Kings Road**

### Inside This Edition...

**CRD on the 955 Hillside Process**

Pages 3

**Councillor Isitt on Containing Urban Sprawl**

Page 5

**Transforming the Grounds at Ecole Quadra School**

Page 6

# HILLSIDE - QUADRA COMMUNITY NEWS

## Meet the news team

**Co-Editors:** Tracy Byrne, Rowena Locklin  
**Assistant Editor:** Helen Cowley  
**Advertising:** Shannon Shylene Schlackl  
**Design & Layout:** Teresa Cowley  
**Committee Members:** Kelly Greenwell, Shannon Shylene Schlackl

The Hillside-Quadra Community News is a forum and information source about projects, issues, meetings, events, history and people in Hillside-Quadra and surrounding neighbourhoods.

### LETTERS TO THE EDITOR

Do you have any comments on articles or H - Q community news? Are you concerned about something in our area? We'd love to hear from you! Send a letter to the Editor: 901 Kings Rd. Victoria B.C. V8T 1W5 or e-mail Kelly at [kelly@quadravillagecc.com](mailto:kelly@quadravillagecc.com).

### WHY ADVERTISE?

Advertising in the Hillside-Quadra Community News is a great way to target thousands of potential clients within walking distance, people who value all things local and want you to succeed. Remind your neighbours what you have to offer them. Let them know your latest promotion, why you are unique, why they should visit you again. You can place a small reminder ad for the whole year for just \$105; or for the same price as a small ad in other publications, you can get a prominent full page ad outlining your services in detail. Don't miss this opportunity to shine for your most important patrons -- your neighbours.

## Affordable rates

Page	Height	Width	Cost (\$)	Full year – 25% off (All 4 issues for price of 3)
Biz card	2"	3.5"	35	105
1/12	4"	3.5"	70	210
1/8	3"	7"	105	315
1/6	4"	7"	140	420
1/4	4"	10.5"	180	540
	6"	7"		
1/2	8"	10.5"	250	750
Full page	16"	10.5"	350	1050

**Full colour \$150 per issue**  
 Publication dates: Spring/Summer/fall/winter

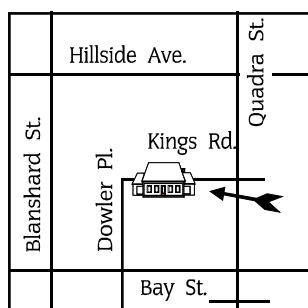
**Email to discuss:** Kelly Greenwell at [kelly@quadravillagecc.com](mailto:kelly@quadravillagecc.com) or call 250 388 7696 ext.221

### INTERESTED IN GETTING PUBLISHED IN H - Q NEWS?

We are looking for story ideas, articles, photos, poems, etc. If you have something you would like to see in an upcoming issue, please e-mail Kelly at [kelly@quadravillagecc.com](mailto:kelly@quadravillagecc.com).

**The deadline for articles and ads in the Spring 2015 edition of the Hillside - Quadra Community News is Friday February 2, 2015.**

**3000 copies of the Hillside-Quadra Community News** are published quarterly through Quadra Village Community Centre



We work together to nurture community well-being by providing services and programs to meet social, educational, health, employment, environmental and recreational needs of the people in our neighbourhood in a safe and welcoming environment.

**HQ News online:** <http://issuu.com/hillsidequadraneews>  
**Website:** [www.quadravillagecc.com](http://www.quadravillagecc.com)  
[www.facebook.com/QuadraVillage](http://www.facebook.com/QuadraVillage)  
**Twitter:** @QuadraVillage

## 955 Hillside - A Question of Vision

Editorial by Rowena Locklin

I have had time to consider the fate of the property at 955 Hillside, the grounds of the former Blanshard Elementary School. In the years I have lived here, I have walked past many times and thought about what could be on the field. Due to the history of the site (discussed in this issue), it is currently zoned for institutional use and does not require rezoning in order to build a very large, 5-storey complex care facility to house frail elderly. There is no doubt that this facility is needed in the region. However, it is our neighbourhood that will bear any negative impacts of the development.

I hold two visions of this project in my mind simultaneously. One adds vibrancy to Quadra Village and to the residents of the facility, and the other does not.

With no meaningful input from neighbourhood residents, the result will be a large impersonal institution that is not integrated with the community. Traffic is routed (as currently mandated) through the narrow alleyway between Hillside to Kings, dumping all vehicles onto Kings Road. Traffic backs up in front of Caffè Fantastico, with drivers trying to get to Quadra Street or cut through to Bay Street on Wark. A kid is hit by a car while skateboarding. Large trucks come and go from the loading docks, adding to the noise and pollution. Huge industrial fans for ventilation systems hum noisily, and bright lights for security glare over the site. Staff members drive to work, alight in the parkade, and drink coffee at the fast food kiosk in the building. The residents are mainly confined to the building and when they are taken out, the outdoor space is largely sterile, with a perhaps few benches and planters. There is no real interaction between the neighbourhood and the seniors centre; it is a stand-alone medical facility.

The other vision is of a facility that adds to the community. The building is still large, but sensitive siting of the facility and gardens softens the edges. The ventilation fans have been sited away from residential complexes and the lighting is adequate but is not overwhelming. Traffic is kept to Hillside Avenue; in fact the alleyway has been partially closed to cars, except for access to the CDI parking lot, and Bluebird Taxi. This section of Hillside has been redeveloped as a "complete street" for everyone. It is designed to enable safe access for all users, including pedestrians, bicyclists, motorists and transit riders of all ages and abilities. This works to allow access to the facility, and functions as a gateway to the Quadra Village centre. Meanwhile Kings Street has seen improvements consistent with its designation as a Greenway and All Ages and Abilities Cycling Route and is even more popular with pedestrians and bicycles. Because of the number of staff working at the facility, there are 250 new daily customers in the Quadra Village area, and some interesting new stores and restaurants have opened up. The residents have an enclosed secure garden (necessary for dementia patients) that offers wheelchair-height garden beds with lots of colour and scent. Outside the secure area there are community garden beds with lots of activity. Some asphalt space has been designated for skateboarding for certain periods of time. The residents are entertained by the various activities outside, watching people come and go. There is a direct opportunity for youth training, both in the construction of the building and later in its operations. A program is set up that introduces youth to work in the large commercial kitchen and other jobs within the centre. There are also many volunteer opportunities that integrate other community members. There is shared space available for community events and some designated community space that has been designed with community input. As well as serving the needs of the region, this facility is a part of the community not apart from it.

"The public is invited to an Open House for the Summit at Quadra Village: Complex Care Facility at 955 Hillside Ave, March 28<sup>th</sup> from 1:30-3:30 p.m. This Open House will be held in the gymnasium of CDI College (former Blanshard School) 950 Kings Road and hosted by the Capital Regional Hospital District and Island Health. Come enjoy some light refreshments and find out more about this project."

## The Summit at Quadra Village – 955 Hillside Avenue

The Capital Regional Hospital District (CRHD) and Island Health are working in partnership to develop “The Summit at Quadra Village”, a 320-bed residential care facility to be built at 955 Hillside Avenue in the heart of Quadra Village. The Summit will replace old, outdated residential care beds at Oak Bay Lodge and Mt Tolmie Hospital.

The 3.5 acre property, which is already zoned for residential care, was acquired from School District No. 61 (Greater Victoria). The land and future building will be owned by the CRHD with Island Health funding the residential care services on completion of the project in 2018.

The Summit will provide 24-hour professional care and supervision in a supportive and secure environment to older adults with complex medical and dementia care needs.

Together with a group of local residents we’ve been discussing best ways to provide information to the community about the project. The CRHD and Island Health were on hand at the 2014 Quadra Village Day event to respond to questions about the land acquisition. At that time we took the opportunity to informally survey people how they would like to be kept informed and updated about the project. We had conversations with dozens of people and learned that the preferred methods of sharing information were through a project website, in-person community meetings, emails, social media and through this Newsletter.

In late December, the Minister of Health designated the site as a healthcare facility under the provisions of the Hospital District Act. This was a critical step to proceed with the project and was the signal for the CRHD to proceed with

formal planning for the new facility.

Project design is expected to proceed later this spring and construction is expected to proceed in the summer of 2016.

A process has already begun with Quadra Village residents to share information with the broader community which will include public information sessions and discussions on features such as welcoming pathways, green space and gardens, community-use of space within the building, and a new bus shelter along Hillside Avenue. We are also interested in hearing about opportunities for feedback on design and other development elements, and strategies to minimize disruptions during construction.

For information about the project visit the Capital Regional District website at <http://www.crd.bc.ca/project/the-summit>

## A Changing Neighbourhood - Heart of Quadra Village to Accommodate 5-Storey “The Summit at Quadra Village”

(Continued from cover)

whether it be community gardens or access to public space – those sorts of things.”

Although representatives from the CRD initially suggested that the community would be involved in the planning process, already these promises appear to be flimsy. An opportunity to involve the neighbourhood in the choice of a name has now been lost. As for amenities, these too apparently are now limited to a pathway, landscaping and perhaps the use of an auditorium.

It is hard to muster a great deal of excitement for the development as presented and it is frustrating that there appears little the community can do to exercise greater control of our destiny. As explained by Leni Hoover and Marion Fraser in a previous edition of the News,

when the last Community Plan was approved (a plan done in the 90's and overdue to be updated), properties near Quadra Village were included in a Development Permit zone, so that full community input would apply to every project in order to protect the Quadra Village centre. The Blanshard School property, however, was not included in this zone, only because it was a school and no building development was expected on that site.

The municipality of Oak Bay has twice rejected this care facility project as inappropriate for their community. The Blanshard School field site was selected because it was the only large undeveloped parcel available in Victoria with the desired zoning. Do Hillside-Quadra residents have a choice about whether this hospital is appropriate for our neighbourhood? If

the Blanshard school property was not included in the Development Permit Area of the community plan and if the intention was to protect the Village atmosphere by ensuring compatible development, can the neighbourhood now assert the need for inclusion in the Development Permit Area in this case? If it is too late, then how can the needs of our community be balanced against the needs of the region? The representatives from the CRD and Island Health have made it clear that neighbourhood needs and impacts are not their first concern. For this reason the City of Victoria could step in and require a higher level of vigilance on this project, so that a community that had its guts ripped out once, does not continue to suffer adversely from poor planning.



Quadra Village Community Centre would like to thank our many supporters. The help of generous funders, sponsors, donors and volunteers means we can accomplish so much more!

**Major Program Funders**  
 City of Victoria, Government of Canada, Greater Victoria School District, Province of British Columbia, United Way

**Program Funders**  
 BC Housing, Coast Capital Savings, Farmer Construction, Get Youth Working, Kidsport, Kool FM, Gordon Head Lions, Participaction, The Most Worshipful Free Lodge of Free and Accepted Masons of BC & Yukon, Telus, Victoria Foundation, Victoria Harbourside Rotary

**Sponsors**  
 Blanshard Square Liquor Store, Caffe Fantastico, Cascadia Liquor Store, CDI, Cold Star Freight, Esquimalt Kiwanis, Fairfield Gonzales Community Association, Farmer Construction, Horner Foundation, Il Terrazzo, Island Savings, Media Net, T.L.C. Fund for Kids, 7-Eleven, Stampers

**Donors**  
 ACD Systems, Akai Hair Design, Anawim House, Art Box, Bootlegger, Carribean Village, Cleo's, Clothesline Clothing Company, COBS Bread, Collins and Company, Esquimalt Kiwanis, Fairway Market, Jennifer Roberts Florist, Kaboodles, Living Edge, Market on Yates, Mustard Seed, Ricki's, Sysco, Thrifty Foods, Wal-Mart and our generous individual community donors

**AKAI HAIR DESIGN**  
 &  
**CARRIBEAN VILLAGE CAFE**  
 PRESENTS  
**DINNER**  
 &  
**TEEN HAIR FASHION SHOW** **2015**

ALL PROCEEDS GOING TO SUPPORT THE TEEN PROGRAM @ "QUADRA VILLAGE COMMUNITY CENTRE"

6:30 - 8:30  
**21 MARCH**  
 CDI College Gym  
 950 Kings Road

DO YOU LOVE TO SUPPORT YOUR COMMUNITY? COME AND JOIN THIS FUN EVENING OF GREAT FOOD, AND GREAT HAIR FASHION.

**TICKETS 15 \$/ EACH**  
**10\$/ children 12 and under**



**AKAI** hair & beauty  
 Quadra Village Community Centre  
 Caribbean Village Cafe

# Approach the Summit Now or Neighbourhood Voices Won't Be Heard

By Kelly Greenwell

The zoning is in place that allows for the construction of 5 storeys of complex seniors' care and an underground parkade. Of the 3.5 acres, 32% of the footprint will be occupied by the building while the remaining 68% can include anything from fenced areas, to asphalt driveways to community green space. The message is clear: the Capital Regional Hospital District and Island Health are coming to build and implement a seniors' care facility. Community amenities will be provided if they are on the 955 Hillside site and of direct benefit to the facility.

It makes you wonder how people would have reacted to the radical shift from neighbourhood school with a gym and open and well-maintained fields to a regional facility with minimal public access. A lot has changed in the last 11 years, but the contrast between a community gathering place such as a school and a care facility could be a stark one. Close your eyes and imagine children playing, running and laughing. Now imagine a building housing 320 seniors with complex health issues such as dementia. Notice the difference?

A great deal is still to be decided in the next few months, but make no mistake: a development is about to be built that is of historic proportions and full of significant implications for the Hillside-Quadra neighbourhood. These implications are widespread and are of acute concern within the quadrant that is bordered by Blanshard, Hillside, Quadra and Bay. Here are a few of the challenges and possible solutions for community members and project stakeholders to consider:

## Parking Nightmare

Currently there are a reasonable number of two-hour parking spaces on Kings. These allow car users to access public resources such as Wark Park, the Quadra Village Community Centre and Citizen's Counselling. A pay parkade is planned for the care facility, which means that there will be significant competition for the free spaces on the street. If these spaces become residential only, how will folks with a legitimate need to drive access the neighbourhood resources? Maintaining the two-hour spaces and providing free parking in the seniors' facility parkade would address this issue.

## Vehicular Obstruction

Currently, a significant amount of pedestrian and bicycle traffic flows leisurely along Kings Rd., which is a designated greenway. Families with strollers and children of all ages are at ease because of the lack of vehicular traffic on Kings. The seniors' facility will bring more traffic and walkers will have to be more vigilant as they step off the curb. If the alleyway becomes the primary access to the seniors' facility then the corner of Kings and Quadra will become heavily congested due to visitor, employee and service traffic (such as the proposed 16-wheel truck deliveries). Kids and families accessing Wark Park will have to be hyper-vigilant as they approach and leave the play area and gardens.



for more of Karen's comics, go to [karengillmoreart.com](http://karengillmoreart.com)

The Capital Regional District and local residents need to continue to work together to ensure that access to the facility is only from Hillside Avenue. This will require support from the City of Victoria, including necessary bylaw changes. The CRD and Island Health need to consider limiting the size of deliveries so that only smaller trucks are accessing the site.

## Noise Pollution

Diligent efforts need to be made to ensure that the sound of construction, fans, machinery, heating/cooling systems and truck deliveries do not overwhelm residents in the vicinity of the development. Adequate insulation and sound barriers need to be put in place.

## Scary Skateboarding

Skateboarding in the vicinity of the proposed development is already a hazardous undertaking. With no accessible asphalt close by, other than the roadway, the likelihood of injury to skateboarders will increase with increased traffic. A paved area within the seniors' facility complex with access to skateboarders and permission for Quadra Village Community Centre to set up a supervised, portable skate park at set times would be a useful option that would give youth an outlet for activity and decrease the frequency of skateboard/traffic hazards.

## Dog Gone

The loss of the school fields will mean the loss of the unofficial local dog park. Where will Fido play, run and thrive?

## Nowhere to roam, nowhere to play

The Quadra Village Community Centre was never planned with fields or a gym, as there was, at the time, access to the Blanshard Elementary school grounds and gymnasium. The community has for a long time been able to enjoy the Blanshard fields at will. Given that everyone in this quadrant of the neighbourhood lives in apartments and town homes and that many

households are low income, ready access to free recreational space is crucial.

The new seniors' care development could and should be part of a solution. One idea would be for the complex to include a large multipurpose room, with a gymnasium floor, to which the public would have access. Creating a system of trails around and through the site would allow for jogging, dog walking and accompanied walks by residents. Picnic tables could be installed and accessed by families and other neighbourhood residents, as well as facility residents and their families. Common green space would allow for spontaneous play by neighbourhood kids. A paved asphalt area with permanent hockey nets and hoops would be a versatile space where the Community Centre could set up a portable, supervised skate park. Such a dynamic environment would be pleasant and interesting for facility residents to look out onto.

Limiting the size of delivery trucks accessing the facility may be necessary to ensure that the site isn't dominated by service roads and large delivery bays. CRHD and Island Health will have to be committed to limiting the use of enclosures and fenced areas for this vision

of publicly accessible outdoor space to be realized.

Fortunately, there is still time to have your ideas heard at the first public Open House on Saturday March 28 (1:30pm at the CDI Gym, 950 Kings Rd.) by writing to the CRD Board at [CRDBoard@crd.bc.ca](mailto:CRDBoard@crd.bc.ca) and Mayor Helps at [mayor@victoria.ca](mailto:mayor@victoria.ca). Your perspective matters and your input could be the difference between the neighbourhood largely benefitting from or being negatively burdened by the development.

Decisions and planning related to this 22.6 million dollar development are crucial to the wellbeing of seniors needing complex care and Hillside-Quadra residents. If a fraction of the budget were given to integrating neighbourhood amenities into the site and facility, then community health would be enhanced. To accomplish this, we will need to engage effectively in the project consultations by bringing our best ideas and telling the CRD Board and the City of Victoria to do right by our children, our youth and all our neighbourhood residents. We must compel the CRD to do all that they can to address our concerns - much as they were prepared to over proposed sewage treatment plant. We must also ensure that City of Victoria councillors fully understand the potential neighbourhood impacts and opportunities. In what way can the City - through Community Amenity Funds (or other financial resources related to this development) - play a part in ensuring that our neighbourhood can cope and thrive as it takes on the task of meeting the regional need for complex care for seniors by hosting this new facility?

Now, close your eyes and imagine seniors who are well cared for surrounded by park-like grounds and a neighbourhood where children are playing, running and laughing.

## Protecting forests and farmland from urban sprawl City Councillor's Update

By Ben Isitt

Right now, the Capital Regional District (CRD) is consulting residents on the Regional Sustainability Strategy (RSS), to guide land use decisions from the Saanich Peninsula to Victoria in the urban core and to Port Renfrew on the Pacific coast.

The RSS will either strengthen the policy of urban containment, mandating that new housing and development be concentrated in existing population centres, or it will provide a green light to urban sprawl, extending pavement and development into the wilderness areas and farmland of the Capital Region.

I strongly support a policy of urban containment.

Protecting forests and farmland from urban sprawl makes sense for a number of reasons. It conserves wilderness areas for the ecological value of maintaining plant and animal habitat, protecting water quality, sequestering carbon, and providing opportunities for outdoor recreation.

Urban containment also conserves farmland for present and future generations. The Capital Region and BC have a finite supply of arable land, due to mountainous terrain, constraints of the marine coastline, and existing urban and suburban development. While farmland is scarce, we also face external challenges: mounting transportation costs, a changing climate with volatile weather and precipitation patterns, and instability in the global capitalist economy. Support for local food systems is essential.

There are additional benefits to building



*Ben enjoys a hike in the Sooke Hills with his daughter Aviva and their friend Rilan. "Protecting wilderness areas is a big benefit of urban containment." (Photo provided)*

compact, complete communities, rather than suburbs with sprawling transportation systems. Suburbs are heavily reliant on private motor vehicles, gridlocked highways and the burning of fossil fuels, impacting air quality and contributing to climate change. Infrastructure of sprawling suburbs is also very costly to maintain over time, with vast networks of roads, sewers and water lines, and low densities to finance reinvestment. Suburbs are often dominated by big box and corporate retail and a lack of social cohesion and community participation.

There are alternatives to urban sprawl. Here in Hillside-Quadra and other inner-city neighbourhoods, we face challenges including income disparity and a lack of greenspace. But I believe we have greater capacity to succeed over time, with our vibrant village centre, healthy community services, and proximity to

employment and services Downtown.

Beyond our neighbourhood, there is substantial land to accommodate new housing and growth for the region without urban sprawl. The area between Downtown Victoria and Uptown in Saanich, roughly bounded by Government Street, Burnside and Blanshard, is currently characterized by single-storey commercial buildings and parking lots. This land provides substantial employment, but transitioning to mixed-use with multi-storey residential above commercial provides the opportunity to build thousands of units of new housing and create substantial employment.

The City of Victoria and District of Saanich are currently developing local area plans for this corridor, which will require extensive consultation with residents, as

well as "quality of life infrastructure" (new parks and dedicated walking and cycling greenways) to ensure new density improves rather than undermines the quality of life.

I hope you will take the opportunity to contact the CRD Board expressing your views on regional land use and urban containment, by emailing <CRDBoard@crd.bc.ca>. Together, we can build a sustainable region that leaves no one behind and protects the natural environment. Doing so requires saying no to development in some areas and concentrating new growth within the urban core.

*Ben Isitt is the City Council liaison to Hillside-Quadra. He lives in the neighbourhood and can be reached at 250-882-9302 or bisitt@victoria.ca.*

## Time to act to prevent home heating oil spills from polluting our waterways

By Rob Fleming

The number of spills from failed home heating oil tanks continues to grow, putting our local waterways at risk and leaving homeowners to deal with significant clean up costs. Since the start of 2015, we have already witnessed three more home heating oil spills find their way into the Gorge Waterway and Colquitz River where they threaten fish, migratory birds and wildlife. These damaging spills occur when aging tanks and accessories are not properly maintained. Municipal and provincial regulations need to reduce these risks and practical solutions are needed to prevent further spills and costly clean up bills for homeowners.

A starting point would be to gather data on where these "at risk" oil tanks are and formalize a process for finding out whether a home has a buried home heating oil tank that was not decommissioned. It is estimated there are thousands of abandoned tanks in the region. Secondly, it makes sense that homeowners should be better protected from financial ruin through insurance policies that protect them

from environmental contamination events. I will be working with government, industry and experts in our community to advance practical solutions to this issue in the Legislature so we can protect our waterways by avoiding future spills.

***The Provincial Budget - what does it mean for you and your community? A Public Forum with MLA's Carole James and Rob Fleming***

When the Legislative Assembly resumed sitting in February the government delivered British Columbia's budget for 2015/2016. I welcome input from constituents and stakeholders about the state of the province and invite you to attend a public forum that I am hosting with Carole James, MLA for Victoria-Beacon Hill & Official Opposition spokesperson for Finance. Join us to discuss the impacts of the provincial budget in our community.

When: Tuesday, March 3rd 7-8:30 p.m.  
Where: James Bay New Horizons Society, 234 Menzies Street.

For more info please contact my community office at 250-360-2023 or email rob.fleming.mla@leg.bc.ca.



**CAFFE  
FANTASTICO**  
SPECIALTY COFFEES

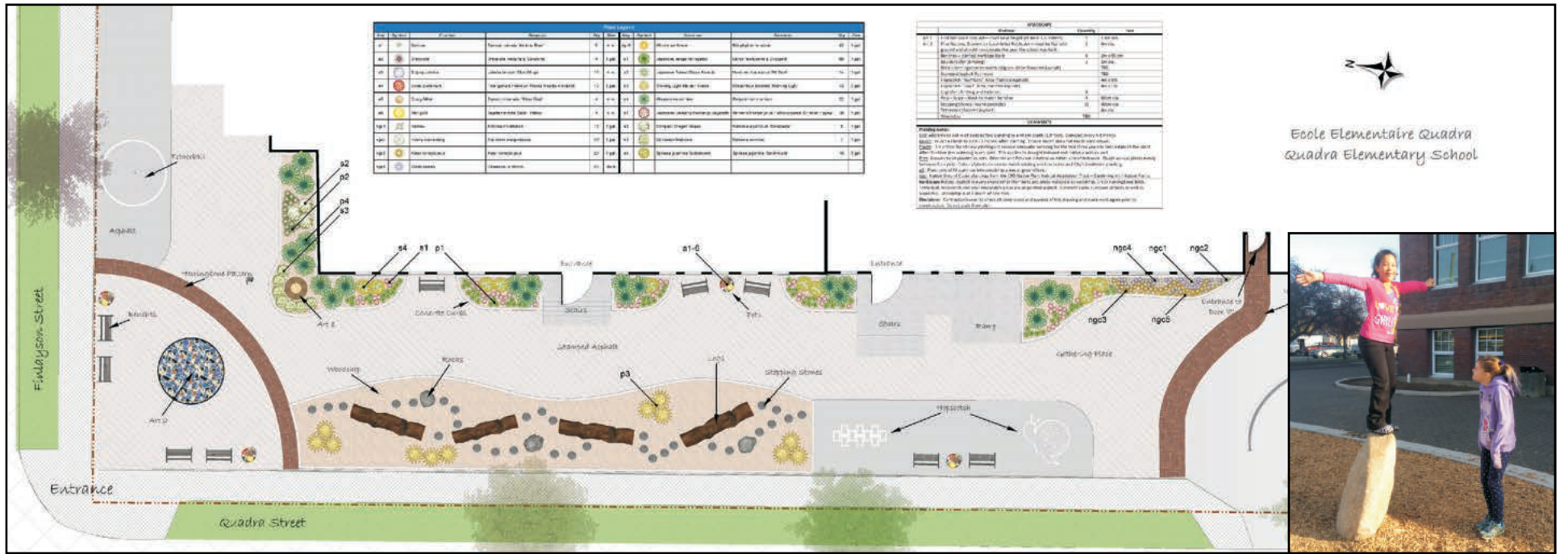
---

**7am - 7pm**  
Daily

---

[www.caffefantastico.com](http://www.caffefantastico.com)

# Building partnerships to transform a schoolyard – a Quadra parent’s tireless efforts to banish the asphalt and give kids a creative space to play



Design for the grounds at the front of École Quadra Elementary, by Horticulture student, Angie Neal. Inset: Students enjoy the naturescape

By Tracy Byrne

Walk past École Quadra Elementary on a school day and chances are you’ll see students playing in the naturescape that was installed at the front of the school last summer – climbing on the rocks, balancing on the logs and jumping from obstacle to obstacle. What you may not know is that the naturescape (as well as the other landscaping improvements implemented recently at Quadra) largely owes its existence to the tireless passion and commitment of one parent and her knack for bringing together the people who can get the job done.

This parent is Kristi MacMillan. Over the past two and a half years, she has been spearheading the movement to enhance Quadra’s grounds: to cast out the asphalt and usher in a more natural, more creative and more attractive play space. Building on the efforts of other parents in the fall of 2012 to restore the remnant of Garry Oak meadow at the rear of the school property, Kristi engaged the college at the Horticulture Centre of the Pacific in the process of envisioning a new look for Quadra’s outdoor spaces.

As part of their course requirements, and working collaboratively with parents, HCP students created landscape designs for different parts of the school grounds. When it was announced that Quadra had been slated for seismic upgrade work during 2013/14, Kristi realized that this presented an opportunity to put at least some of the students’ design ideas into practice. She immediately decided to focus on the front of the school. The asphalt would have to come up to enable the construction. Why simply let the contractors put it all back again when something so much better could go in its place?

One of the student designers, Angie Neal, was particularly eager to work with Kristi and the Parents Advisory Committee. Angie’s design for the grounds at the front of school, which included stamped concrete, native plantings, public art and a nature park, was shared with the Quadra community for feedback and input. Her revised design – incorporating several elements suggested by parents and staff – has formed the blueprint for the new landscaping at the front of the school.

“Angie was amazing,” says Kristi. “She donated hundreds of hours of her time to revising and refining her design.” Angie also created a video representation of her design that walks the viewer through the transformed landscape. “Her plan and video were why I was successful in

getting grants,” Kristi reflects, “Because people could see what it would be like. They could really understand and envision what we were trying to do.”

For Kristi, the vision is centred on a few core principles: Does it get kids moving? Is it tactile? Is it interactive? Is it natural? And is it what the kids want? “The whole idea of movement, making the school grounds a community space, and prioritizing walking – these were the issues behind the design for the front of the school,” Kristi explains. Local organizations and granting foundations have been responsive to this vision and generously donated funds and in-kind services to the project. “It’s neat,” says Kristi, “to see real recognition from funders that kids need space to play. I go to the school every single morning and the kids are all over the rocks and the logs. And seeing them there is why I’m still doing this.”

Moving from the design concept to actually implementing the landscaping has been a complex process calling on all of Kristi’s negotiation, persuasion and strategic management skills. Kristi describes an intricate dance of finding the right people to talk to, navigating jurisdictional policies, untangling the long list of liability issues associated with each idea (“Rocks can’t have angles!”), and delicately making the most of any opportunity to move forward. She has spent hours engaging with the School Board, the City of Victoria, the architect and the contractor for the seismic project, as well as parents and school administrators, in order to get the necessary approvals for each of the design elements and initiate the work to put them in place.

“This is not a dedicated job for anyone. And everybody is busy. It’s off the side of the School Board’s desk, the principal’s desk ... and to coordinate everybody when it’s all off the side of their desks is very challenging,” Kristi explains. “It was all about posing the right questions. Getting the right people in the room talking together, to find the answers to get it done,” says Kristi. “It’s also about waiting for the opportunity and taking the time to get to know people.”

In fact, it’s the relationships that have been forged through the project that most excite Kristi. “Everybody was so helpful,” she asserts, citing the openness of the architect and the contractor towards integrating aspects of the landscape design into the seismic work, the generosity of local volunteer organizations and city planners in sharing their expertise, and the willingness of the School Board to support and

facilitate the process. “Kimberley Stratford and Thomas Munson at the City of Victoria were incredibly helpful,” notes Kristi, “I spent a lot of time on the phone with them! And the School Board has been incredible to work with within the scope of their business.” Marilyn Campbell, Quadra’s principal, has been instrumental in the success of the project too. “She did a lot of work to get the people in and get things done,” says Kristi.

While much of the design for the front of the school is now in place – the naturescape, the stamped concrete, the pathways, and the flowerbeds (ready for students to plant in the spring) – the project is still ongoing. Three more elements are currently underway or imminent. One is a student art project, supported by funding from ArtStarts, which will see an artist coming into the school to work with students on “friendship flags”. The flags will decorate the front of the school as part of the Centennial celebration day in June. Another element of the landscaping project that ties in with Quadra’s 100<sup>th</sup> birthday is the donation of “memorial benches”. These are currently being installed at the school. One of the benches has been donated in memory of Elinor Rhynas, valued community advocate and the former editor of this newspaper. Finally, preparations are in place for the celebrated Kwakwaka’wakw carver, Tony Hunt Jr. to carve a pole for the school. The log – which must be of a suitable size and quality, with few or no branches and straight grain – is being sourced and donated by TimberWest. The carving will take place at the Quadra school site and students will be able to experience firsthand a master carver at work on a monumental piece of traditional West Coast First Nations art.

“In the coming months, you’ll see a huge tent go up at the school as well as more construction fencing – all to protect the carving area,” says Kristi. “My next task is to organize a tent raising and a fence raising,” she smiles. “I just keep working away.”

*To date, contributors to the project have included: ArtStarts, City of Victoria, Community Savings Credit Union, Friends of Elinor Rhynas, Habitat Acquisition Trust, Harbourside Rotary, The Mather Family, Mitchell Excavating Ltd., Mike and Shellie Gudgeon, Parks and Recreation Foundation of Victoria, TimberWest, TLC Fund for Kids, and VanCity.*

**Open House: Summit at Quadra Village (955 Hillside Ave), March 28<sup>th</sup> from 1:30-3:30 p.m. at CDI College**

## Meet Our Creative Neighbor: Wynn Gogol

### Please tell us a bit about yourself

I'm a dad and husband, as well as an author and musician. I love to write songs, and I also produce and record music.

### Tell us about your creative pursuits - what media/genres/forms do you work in and why?

A typical day at work is spent fitting songs and sounds together. It's a job that requires wearing a few different hats. As a music producer, I work with musicians to craft performances that put the song across in the best possible way. When I wear my recording hat, I think about how to capture tones that will have a certain desired effect on the listener. Then comes mixing, which means creatively combining the various performances in a particular song into a finished stereo recording. The end result has to deliver the song in a way that seems utterly compelling. I enjoy working in many different musical genres, but my favourite songs have one thing in common. They often feel like I'm being drawn into a short movie.

### Why did you choose to make your home in this neighbourhood of Victoria?

My wife Kath and I rented a place on Kings Road before we bought a house here. We've always enjoyed the lifestyle and sense of community. Everything we need is within walking or biking distance, so it's been easy to settle down.

### What inspires you to create?

In creativity there's a meditative rush, a kind of 'juice' that flows from the act itself. Creating something from nothing is incredibly rewarding when we completely surrender ourselves to the



process. Having said that, I'm a firm believer in the value of craftsmanship, a work ethic and finishing what I start. I can't steer a project that's stuck in neutral, so it's important to work and create, even when I don't feel inspired.

### Are there any projects or ideas that you're currently working on that you'd like to tell your neighbours about?

Lately I've been co-writing with various song-writing partners to create songs for

commercial licensing. This also gives me a chance to try out new sounds and recording techniques. I'm fascinated by big tones and ambient sounds. A colourful echo or a reverberant space can have a profoundly emotional effect on the mood of a recording.

One of my favourite recent projects involved designing and building two full-sized plate reverbs for my recording studio. A plate reverb uses a very thin, 3 feet by 6 feet steel sheet to produce a gorgeous, lush sounding space when you play a sound into it, a voice or a snare drum, for example. Mike McCaffrey worked with me on the design and he handled the actual fabrication. It was amazing to see the plates come together and the sound is incredible, like drizzling expensive chocolate or something. Instant 50s/60s/70s vibe. Mike is an enormously talented guy and he lives a block away.

### Which of your creative achievements are you most proud of/satisfied with and why?

I'm very proud of my little boy, who just turned four. He inspires me every day. Of course, Kath did most of the creative work on that one, but typical man that I am, I like to take some credit. Next on the list would be my book, *The Artful Songwriter*. It took four years to complete, so it was more of a marathon than a sprint, as creative projects go. My book was released last fall by Ekstasis Editions, which is owned by Carol Sokoloff and Richard Olafson, who live across the street. Our neighbourhood is home to so many amazing creative talents.

*If you're interested in talking about song-writing, music or creativity, feel free to give me a shout: [onetonstudios@gmail.com](mailto:onetonstudios@gmail.com)*

## Mango Sago Recipe

By Karen Hira, VIRCS

Below is a recipe for Mango Tapioca that we collected from the Victoria Immigrant & Refugee Centre Society (VIRCS) Women's Group

### Ingredients:

White tapioca (Sago)  
Mango (and any other fruit you would like)  
Coconut milk or regular milk

### Directions:

1. Soak tapioca in water for an hour (until it is immersing)
2. Rinse to remove excess starch
3. Boil water and the tapioca
4. Cook tapioca until it gets transparent and soft (keep mixing or it will stick to the bottom of the pan)
5. Rinse cooked tapioca in cold water, then put it aside and wait to use it later
6. Make some mashed mango paste (mash or puree mango)
7. Add the paste to coconut milk or regular milk until creamy
8. Add the cooled tapioca to the cream mixture
9. Add mango and any other fruit you would like in chunks
10. Add sugar according to your taste



I ♥  
Clean  
Air. 

**EFFECTIVE APRIL 1, 2015**

**Enjoy smoke-free outdoor public spaces in your municipality.**

- Parks • Playgrounds • Public Squares • Playing Fields

**As well as a 7 metre smoke-free buffer zone around:**

- Bus Stops • Doorways • Windows • Air Intakes

For more information: [www.crd.bc.ca](http://www.crd.bc.ca) or [www.viha.ca/news](http://www.viha.ca/news)

Or contact: 250-360-1450 or [CleanAirBylaw@viha.ca](mailto:CleanAirBylaw@viha.ca)

Clean Air Bylaw 3962

**CRD**  
Making a difference...together

**island health**

# Hillside Quadra Neighbourhood Updates

By Janis La Couvée, on behalf of the Hillside-Quadra Neighbourhood Action Group

The Hillside Quadra Neighbourhood Action Group (NAG) is a sub-committee of the Downtown Blanshard Advisory Committee (DBAC) the not-for-profit that is our neighbourhood's Community Association and runs the Quadra Village Community Centre, and is comprised of a group of volunteers that works on issues related to land use, transportation, and parks in our neighbourhood. Anyone with a connection to our neighbourhood is welcome to come to meetings or join our email list. We meet at the Quadra Village Community Centre at 7:00 PM the first Monday of each month from September to June, except when the first Monday is a holiday we meet on the second Monday.

## Email List:

NAG maintains an email list and sends out regular updates. If you would like to subscribe to this list, please email [nag@quadravillagecc.com](mailto:nag@quadravillagecc.com) with SUBSCRIBE TO LIST in the subject heading.

## Hillside-Quadra Priorities

Victoria City Council is in the process of evaluating City priorities, both for the coming year and for use in a multi-year strategic plan. The Hillside-Quadra Neighbourhood Action Group discussed this process at the January meeting, and sent a letter to council, asking that they emphasize the following issues and principles when drawing up those plans:

- Working with the CRD, Island Health and the community around the development of 955 Hillside, so as to maximize the benefits, minimize the impacts, and ensure public involvement in the process.
- Protecting park and school lands through the use of zoning, and completing the Park Master Plan.
- Proceeding with the refurbishment of the

Crystal Pool facility while protecting the adjacent greenspace.

- Amending the Highway Access Bylaw to give the City more discretion in determining the safe transportation flow for major projects, rather than requiring access to always be on the most minor road.
- Approaching transportation planning with a focus on multi-modal and safe traffic flow, and evaluating new City infrastructure (even in areas such as stormwater planning) for its potential to play a positive role in traffic calming.
- Ensuring equitable investment between different parts of Victoria (particularly where there has been historical underinvestment), and supporting business development in Village Centres.

## Transportation Concerns

Members of HQ NAG are active participants in the Victoria Community Association Network (VCAN) working on Safe Streets initiatives. High-level priorities identified by VCAN include:

- Make safe streets and active transportation a top priority for City Council this term
- A participatory neighbourhood approach to solving transportation challenges, supported by City staff
- A substantial capital budget to achieve active transportation objectives
- Improve cyclability and cycling infrastructure; complete the cycling network
- Improve walkability and pedestrian infrastructure
- More traffic calming measures
- Reduce car traffic volume – get people onto sidewalks, bikes, and buses
- Increase enforcement and education

In Hillside-Quadra a few specific examples include:

A participatory approach to the traffic management planning of the development of the new 6 storey 320 bed extended care facility at 955 Hillside

- Amendment of Highway Access Bylaw to allow traffic access from main corridor when of overall benefit to neighbourhood
- Slow traffic on Hillside Ave between Blanshard and Cook Street
- A signalled crossing at Graham at Hillside, a designated bicycle route
- Cycling infrastructure on Kings and Graham Streets, designated on the Bicycle Master Plan
- 30KM School zone in front of Quadra School

## Summit Park Invasive Species Clean-Up

The Friends of Summit Park (FOSP) and NAG volunteers recently completed a second invasive species clean-up in Summit Park. Thanks to everyone who attended. Additional clean-ups will be scheduled as volunteer resources allow. If you can help, please contact us at [nag@quadravillagecc.com](mailto:nag@quadravillagecc.com)

## High-Profile Development Proposals in Hillside-Quadra Neighbourhood

The City has designated our group as the contact for developers proposing changes that require the City to change the zoning for the property involved. We host meetings to which the neighbours and any other interested persons are invited to hear about the proposal and provide their comments. After that the project goes

through a formal review process at City Hall. Ultimately, City Council holds a public hearing before any approvals are given or denied.

## 955 Hillside – The Summit at Quadra Village

Representatives from Island Health and the Capital Regional Hospital District (CRHD) were featured guests at the February Hillside-Quadra Neighbourhood Action Group meeting. A public engagement process will be scheduled soon. Zoning for the facility is already in place and no public hearing is needed. There are several articles in this month's HQ News about this development. Please sign up through [nag@quadravillagecc.com](mailto:nag@quadravillagecc.com) for regular updates. The request for proposals will be issued after these meetings. 955 Hillside is a replacement for the current Oak Bay Lodge and Mount Tolmie Hospital facilities and will be comprised of 320 beds of residential care for seniors with complex needs. The actual building is likely to be 5 storeys with underground parking and will be similar to the current facility being built on Carey Road (Mount View Heights (260 beds) – a replacement for Mt Edwards and Central Care Homes).

## 2560 Quadra (beside the Wooden Shoe)

The current owners held meetings with the Hillside Neighbourhood Action Group (NAG) and the community under the CALUC process. NAG wrote a letter to the City outlining neighbourhood input. A proposal (for a four-storey, 18-unit rental building with ground floor retail) was presented to the Planning and Land Use Committee of the Whole (PLUC) January 29<sup>th</sup> with staff recommendations for a third-party land lift analysis (to determine the value of the additional zoning). At the PLUC meeting, council voted to refer the proposal back to staff and the community for further consultation.

## 1066/1070 Finlayson

The proposed subdivision of the existing two lots to create a third lot under R1-B single family zoning was turned down at the public hearing January 22, 2015.

## BC Government Liquor Store (Blanshard Square, Blanshard and Hillside)

This proposal is in the Burnside-Gorge neighbourhood and borders Hillside-Quadra. HQ NAG has no formal input in the re-zoning process. The proposal is to permit the relocation of the existing Liquor Retail Store to another location within the mall and to allow an increase in the size of the Liquor Retail Store. At the public hearing on January 29<sup>th</sup>, council decided to postpone the vote on this proposal, asking staff to provide more information regarding changes to provincial policies governing liquor sales and city policies regarding liquor retail size.

## How You Can Get Involved

One of the best ways to be involved is to attend one of the monthly NAG meetings. If you are unable to attend a meeting and would like to know more or be involved in any neighbourhood land use or transportation matters, please contact NAG at the number shown below. NAG is currently recruiting volunteers to help with community meetings held as part of the rezoning process. If you're interested in land use issues, and can help out on an occasional basis, we'd love to hear from you.

Contact:

Email: [NAG@quadravillagecc.com](mailto:NAG@quadravillagecc.com)

Phone: (250) 388-7696 x 301

Web: <http://www.quadravillagecc.com/hillside-quadra-neighbourhood-action-group>

### Distribution Area





### Newsletter box locations:

- Fairway Market (at Quadra and Kings)
- Italian Bakery
- Quadra Village Community Centre
- Crystal Pool (inside facility)
- Ecole Quadra School
- Rob Fleming MLA Constituency Office
- McGavin's Bread Basket
- Mixer Food Mart

Find us online at:  
<http://issuu.com/hillsidequadraneews>



## Update from George Jay Elementary



*George Jay students explore creative and collaborative learning*

*By Terri Smith, Vice-Principal*

*We can only see a short distance ahead, but we can see plenty that needs to be done.*

*(Alan Turing)*

At George Jay we know our children must be prepared for an unknown future. Cultivating minds that are open to exploration, challenging problems, and accepting personal, and social responsibility is our business, and we take it seriously. This year, we have many initiatives designed to help children develop essential competencies needed for them to thrive, no matter what their futures may bring.

One such initiative, our Creativity Project, focuses on using play to develop self-regulation skills, including the ability to engage and persist, manage impulsivity, think flexibly, and work cooperatively with others. With generous funding from Harbourside Rotary, we created workstations where children create, explore, reflect, and think creatively in a risk-free, play-based environment. Children create with the likes of Lego, wooden planks, gears, marble runs and snap circuits and discover truths about distance, speed, velocity, patterning, structural

integrity, electricity, and aesthetics. Strategy games such as Blokus, Quirkle and Mancala encourage players to think strategically and to win or lose graciously. Through play, children K to 5 are motivated to think creatively, reason critically, and work cooperatively to solve problems or simply to explore possibilities.

Collaborating with others is an essential life skill. At George Jay, we know this, and foster opportunities for everyone to build their pro-social (cooperative) muscles. For example, our music program, directed by teacher, Annie Shum, encourages children to participate in a variety of collaborations. With new instruments purchased with support from Oak Bay Rotary, and outreach opportunities to work with the Victoria Conservatory of Music, and Central Baptist and Glad Tidings Churches, Mrs. Shum has orchestrated many and diverse opportunities for children to experience the joy of making music with others.

Our many collaborations enrich the learning we do at George Jay. With high learning standards as our persistent focus, George Jay teachers engage in a host of initiatives designed to improve learning for all. With support from the Greater Victoria School District, the BC Ministry of Education, and Samsung Canada,

teachers explore ways to craft powerful learning opportunities through technology. In the early grades this means using iPads to document learning with apps like Book Creator or Comic Life. In the intermediate years, students use Chromebook computers to explore and create their own learning and to develop ethical digital citizenship. At the same time, teachers are busy exploring new ways to communicate with parents through a Canadian-created technology, Freshgrade, and learning better ways to support the 3R's through Early Learning, Numeracy and Language Acquisition initiatives.

In the last six months, we have adapted to our home away from home, endured broken water mains, lost boxes, flooded classrooms, crowded school buses and a host of other inconveniences associated with our seismic upgrade. At the same time, we have embraced Early French Immersion, enhanced our Breakfast Club with support from Breakfast to Beethoven, improved our technology base, sustained our community relationships, strengthened student achievement and experienced new adventures. Thanks to all our George Jay Champions, who support us on our journey to provide a positive educational experience for all of our students. Our fortunes continue to outweigh our needs.

## Update from École Quadra Elementary

*By Gillian Lawson, Vice Principal/Directrice adjointe*

Since their return from the winter break, Quadra students have been busy with activities both in and out of the classroom. In January, several classes walked to the Victoria College of Art to watch the artist, Tony Hunt, carve a totem pole. We look forward to having Mr. Hunt come to Quadra in the spring to begin carving a totem to be installed by the heritage part of our building at the corner of Quadra and Finlayson. Also in January, Quadra sent a team to the Basketball Jamboree held at Reynolds High School. Swim Club started up again, under the supervision of our Youth and Family Counsellor, Susannah McKee.

Events in Quadra School included "Reading Around Quadra" where every staff member chose a favourite book to read and students were free to attend the reading of their choice. The school enjoyed presentations of aboriginal drumming, storytelling, and rhythmic gymnastics. Quadra also benefitted from a number of ArtsReach workshops both during and after school, including a Theatre Arts Workshop in January/February and Dance workshops in February.

January was also the time for Kindergarten Registration in the Greater Victoria School District. We were delighted to see so many parents of next year's Kindergarten students come to our school to register in both the French Immersion and English programs and we look forward to welcoming these new students and their parents to our school in September 2015.

In February, Grade 2 and Grade 4/5 students attended Victoria Symphony performances at UVic. February also brought the "Bigger Than That" presentation with Ryan Liard. Mr. Liard's focus is anti-bullying which coincided nicely with Pink Shirt Day on February 25, a day designed to promote anti-bullying efforts in schools. Celebrations included the Aboriginal Dinner on February 18 and the Fashion Machine show by Skam Theatre on March 1. This last presentation was the culmination of a four-week Skam Theatre project involving teams of students collaborating on fashion design and display.


Our PAC continued its efforts to bring the community together by sponsoring the school year's second "Movie Nite" on

February 13. Great fun was had by all. Preparations are well in hand for the École Quadra School 100<sup>th</sup> birthday celebration on Saturday, June 6. Look for the banner coming soon outside the school!

**NDP**

**Murray Rankin**

Working hard  
for Victoria



Please contact me or drop by my community office.  
Your concerns and priorities are important to me.

murray.rankin@parlgc.ca  
250.363.3600  
COMMUNITY OFFICE FOR MURRAY RANKIN, MP FOR VICTORIA  
1057 Fort Street, Victoria

## Sons of Norway Member – Margaret Gilstein

By Cheryl Westergard

**M**argaret Gilstein is a long time member of the Sons of Norway Lodge in Victoria. At the age of 96, she is, in fact, the oldest founding member. Although there are members of the lodge who are over 100 years of age, they have joined more recently. Margaret told her story as we sat down over a wonderful breakfast of delicious Norwegian waffles infused with the flavours of cinnamon and cardamom, fresh squeezed orange juice, and a pot of coffee, all prepared by Margaret of course.



Margaret is very busy with lawn bowling, gardening, painting, bridge and community activities. Up until a year ago, Margaret would carry the Norwegian flag for the Norwegian float from Mayfair Mall to downtown Victoria as part of the Victoria Day parade. However, just over a year ago, she had a stroke and was paralyzed on one side. Margaret's doctors were surprised by her very fast and remarkable recovery. Margaret was released from the hospital within a month and a half because, according to her, she needed to get home to work in her garden.

Margaret was born in Saskatchewan, the daughter of a Norwegian sailor who immigrated to Canada, eventually leaving the sea to homestead near North Battleford. Her mother was also an immigrant, arriving from England with a friend on the first boat after the Titanic. According to Margaret, her mother had intended to take the Titanic but as she was not a first class customer, she did not have priority and was not able to secure passage.

Margaret's parents met at a chocolate shop in North Battleford when her father bought her mother some chocolate. In those days, transportation was more difficult and Margaret's

father would walk 37 miles to court her mother. They were married relatively quickly. Margaret was the third child born in a family of seven.

During the winter months, Margaret's father came out to Vancouver Island to work on the Malahat as a blacksmith. He commonly did this in the winter to make additional money and because he did not enjoy the cold winters on the prairies. Margaret came out to be with her father one winter and that is how she met her husband at a dance. According to Margaret, she started dancing in 1939 and continued dancing up until 2009, when she stopped because she no longer had a dance partner.

There is still a slight remnant of the paralysis and Margaret sometimes uses a cane now. Nevertheless, she still rises early and has a full schedule each day. January and February are her painting months (she is a prolific painter) and in February she begins gardening daily. When queried about her longevity and good health, Margaret replied that she has always worked hard and eaten well. I think that her amazing zest for life and continued involvement in the community has also contributed to her long life and wellbeing.

RECOGNIZED AT THE HIGHEST LEVEL OF THE GREEN BUSINESS CERTIFICATION PROGRAM (GREEN)

FANTASTIC MONTHLY SPECIALS AND REWARDS FOR LOYALTY MEMBERS - LIKE NO CHILL CHARGE!

**PROUD TO BE A PART OF THE QUADRA VILLAGE COMMUNITY**

LOCALLY OWNED AND OPERATED YOUR NEIGHBOUR SINCE 2009

Locally owned, 5 locations on Vancouver Island  
 Quadra (next to Fairway Market)  
 Uptown • Langford • Colwood • Courtenay  
 cascadialiquor.com

**cascadia LIQUOR STORE**

## Richmond Brings Godot to The Roxy

By Shauna Baird

**J**acob Richmond can frequently be seen tromping around Quadra Village. You might not notice him if you passed him. He has an unintentionally rumpled appearance, cigarette in one hand, phone or script in the other. He is a sort of "Everyman" who can go unnoticed...that is, until you see him on stage. Richmond is well known to Victoria audiences as an actor, writer and director. He is a co-founder of Atomic Vaudeville and appears frequently as a member of Blue Bridge Repertory Theatre's core acting ensemble. His work is raw, edgy, funny and unpredictable.

Next, Richmond turns his considerable talents to directing Samuel Beckett's classic tragicomedy *Waiting for Godot*. It will open on March 3<sup>rd</sup> at Victoria's newest live theatre, the ROXY on Quadra Street. *Godot* was voted "the most significant English language play of the 20<sup>th</sup> century", but Richmond is not daunted.

"I want to do a straight up production that serves the text...no crazy interpretation...Samuel Beckett wouldn't have liked that!" says Richmond. The piece demands four very strong actors. They have to be able to play from the heart, handle rapid-fire dialogue with sizzling comic timing and have the ability to sit in uncomfortable pauses. After all, they are waiting...Waiting for Godot. Richmond has assembled such a cast. Peter Anderson will play Vladimir, local favourite Brian Linds will play Estragon, Scott Highland will appear as Pozzo and at the end of his tether will be Trevor Hinton as

Lucky.

Richmond sees *Godot* as an obvious allegory of the human condition. "We are all waiting for something, something to complete us. While we wait, our lives burn. People get tied up in the descriptors of the piece...minimalist, absurdist, existentialist... but most of all *Godot* is deeply moving and achingly funny. A lot of the physical comedy and slapstick is based on Laurel and Hardy." The characters of Vladimir and Estragon have been tackled by some great actors: Geoffrey Rush and Mel Gibson, Robin Williams and Steve Martin, Nathan Lane and Bill Irwin, Ian McKellen and Patrick Stewart, have all played the these roles.

Richmond is excited to be opening *Godot* in his neighbourhood. He is married to the talented dancer and choreographer Trenea Stubel and they have a young son. "We found a great bungalow near Topaz Park and we haven't looked back. The area has great street life - Caffè Fantastico, Fifth Street, and Part and Parcel. The salad bar at Fairways is mainstay for actors." The Roxy is becoming a real creative hub for artists, especially the small and medium sized companies for whom the civic options are too expensive. "It is a great new space that has a long history in the community." It is a perfect space for one of the greatest plays of all time, that calls for an empty stage, a tree and two figures who wait each day and yet have to survive.

*Waiting for Godot* runs Tuesday to Saturday nights at 8:00 at the Roxy from March 3-15. Matinees on Wed, Sat, and Sun. Check out [www.ticketrocket.org](http://www.ticketrocket.org) for details. \$20 student tickets are available at the door.

**MLA Victoria-Swan Lake Rob Fleming**

Working for you

1020 Hillside Avenue  
 250 360.2023  
 rob.fleming.mla@leg.bc.ca  
 www.robflamingmla.ca

Do you have any comments on articles or H - Q Community News? Concerned about something in our neighbourhood? Share your thoughts with us in a letter to the Editor: 901 Kings Rd. Victoria B.C. V8T 1W5 or email: [therah@telus.net](mailto:therah@telus.net) We'd love to hear from you!



Find out what's happening in Hillside-Quadra! If you have any upcoming community events, shows, courses or meetings you can promote them FREE of charge on the Community Program and Event Listings! Call Kelly at 250-388-7696 or email [kgreenwell@quadravillagecc.com](mailto:kgreenwell@quadravillagecc.com)

**Quadra Village Community Centre**

<p><i>All Quadra Village Community Centre Programs listed are free of charge except for the Hot Lunch Program (exceptional value) and Out of School Care (free to families eligible for full subsidy). Unless otherwise noted call 250.388.7696 or check out <a href="http://www.quadravillagecc.com">www.quadravillagecc.com</a> for details. The Centre is closed December 20 to 29.</i></p>	
<p><b>Best Babies</b> A pre-and post-natal health program. One-to-one support, dietician, public health nurse and dental hygienist services. Tues 11 a.m. - 1:30 p.m. Call Helene for info (registration required).</p>	<p><b>Knowhow</b> Adults of all ages are invited to learn and share practical skills. Cook, craft and make things together. Wed 1:00 - 2:30 p.m., dates TBA. Call Gillian.</p>
<p><b>Parent &amp; Tot Drop-In</b> Creative play for children 0-6 yrs. and their parents/caregivers. Mon, Wed and Thurs 9-11:30 a.m. Tues 9:30-11 a.m. for children 0-3 yrs. Call Gillian for more info.</p>	<p><b>Internet Access</b> Access to four computers and printer, Mon to Fri, 9:00 a.m. - 3:45 p.m. (Except closed Tues 1:30 - 3:00 p.m.) Call Shawna for details.</p>
<p><b>Step by Step Parenting</b> Supportive discussion group for parents/caregivers based on effective parenting strategies. Childcare provided. Dates TBA. Contact Helene or Gillian for more info.</p>	<p><b>Seniors Card Group</b> 50 and over? Weekly card game and socializing Mon 12:30 – 3:00 p.m. Snacks, tea and coffee provided. Call Shawna for details.</p>
<p><b>Music with Joie</b> Creative drop-in music program for children 0-5 yrs. with parents/caregivers. Fri 10:30-11:30am. Call Shawna or Gillian for info.</p>	<p><b>Sensational Seniors</b> 50 and over? Get together for conversation, activities, information, good times and good company. Snacks, tea and coffee provided. Tuesdays 11:00am. Call Shawna for details.</p>
<p><b>Licensed Out-of-School Care (Ages 6-12)</b> A fun, safe environment for your children. After-school and full-time during Pro D days and school breaks. Activities include: in/outdoor games, music, arts, crafts, baking, and day trips. Pick up available for children from Quadra and George Jay Elementary Schools. Contact Deirdre for availability and info.</p>	<p><b>Seniors Entitlement Services (SES)</b> Serving seniors who believe that some essential services are denied them. Open for consultations Mon, Wed and Thurs 9:00 a.m. - 3:00p.m. *SES is closed over the Holiday Season from Dec. 22 - Jan. 5.*</p>
<b>Community Programs and Events</b>	
<p><b>Child, Youth and Family Worker</b> Assists children and families in areas such as support, mediation, advocacy, mentoring, goal setting, life skills, coping, safety planning, parenting strategies, healthy relationships and referrals. Call Helene.</p>	<p><b>Affordable Room Rentals @ Quadra Village Community Centre</b> Planning a special event? Require a meeting space? Just want a comfortable place to gather with a group? We've got the room for you, with 6 different rental spaces to suit almost any need. Bright, spacious rooms for private meetings or public presentations. Comfortable couches and chairs for more informal gatherings. Even an awesome Teen Centre to host that perfect birthday party. Call Shawna at 250-388-7696, or email: <a href="mailto:frontdesk@quadravillagecc.com">frontdesk@quadravillagecc.com</a> for room sizes, on-hand equipment and availability.</p>
<p><b>Youth Drop-In (Ages 10-18)</b> A safe, fun place for boys and girls to hang out. Activities include: pool, Ping-Pong, board games, air hockey, hoops and Internet. Call Jennifer.</p>	<p><b>Hillside Urban Farmer For Sustainability (HUFFS)</b> HUFFS is a community of people, interested in food gardening, who live in or near the Hillside-Quadra, NorthPark, Fernwood area. We come together to learn about urban food production by sharing information, success and challenges, seeds, seedlings and tasty food. One of our goals is to foster community through food production (learn more on the about page). We try to organize a monthly event on varying topics such as soil fertility, backyard chickens, beekeeping, winter gardening, etc. For more info check out <a href="http://huffs.ca">http://huffs.ca</a></p>
<p><b>The Crew (Ages 13-19)</b> The Crew gets together to work on projects, learn new skills, plan activities, volunteer and hang out. Mon 4:00-5:30 p.m. Call Jennifer or Terri.</p>	<p><b>Hillside Quadra Neighbourhood Action Group (NAG)</b> The Hillside Quadra Neighbourhood Action Group (NAG) is a group of volunteers that works on issues related to land use, transportation and parks in our neighbourhood. We meet at Blanshard Community Centre at 7 pm the first Monday each month from September to June, except when the first Monday is a holiday. For more information, contact us at <a href="mailto:nag@quadravillagecc.com">nag@quadravillagecc.com</a>.</p>
<p><b>Youth and Family Worker</b> Offers support, mediation, advocacy, mentoring, goal setting, life skills, safety planning and referrals for youth 13-19 and their families. Parenting consultations also available. Residents of Hillside-Quadra and nearby neighbourhoods, call Laurie at 250-388-7696 (ext.228).</p>	<p><b>VicPD Block Watch Program</b> A good neighbour is one of the most effective crime prevention tools ever invented. Want to learn more about how you, or your street, can join the VicPD Block Watch program? Contact VicPD Block Watch Coordinator at 250-995-7409 or visit <a href="https://vicpd.ca/block-watch">https://vicpd.ca/block-watch</a></p>
<p><b>Youth and Family Counsellors</b> School-based Youth and Family Counsellors provide support, counselling and advocacy for youth and their families at S.J. Willis, Vic High, Quadra, Cloverdale, Oaklands, Reynolds and Cedar Hill Schools.</p>	
<p><b>Family Night</b> Fun activities and snacks at the Centre, Tues 6:00 - 7:30pm. For children of all ages and their parents/caregivers. Ask for Deirdre.</p>	
<p><b>The Hot Lunch Program</b> A tasty hot lunch (entrée, salad, dessert and coffee/tea) in a welcoming environment. Thurs 12:00 -12:30 pm. Stay and socialize until 1:00 pm. Adults \$3.00, Volunteers and Children \$1.00.</p>	

# Quadra Village Day Sponsor Spotlight - Community Savings

By Janis La Couvée

We are fortunate to have many wonderful supporters and sponsors of Quadra Village Day, without whom organizing a completely free event of this magnitude would not be possible.

Community Savings has been a fixture in Quadra Village since 2003 in their location at 2650 Quadra (fondly known as “The Q Building”), and has been on-board since the genesis of Quadra Village Day. The organization has increased its role over the years with respect to sponsorship funds and volunteer involvement and is now wholly responsible for the very popular children’s plant potting activity. Manager Kiyoko Shimizu-Forbes remembers being contacted by organizers in 2002, a full year before the first Quadra Village Day.

“They told me the goal was to raise funds to enhance and beautify the Quadra Village area. It was also their hope to create positive awareness of the area to get more people to come and visit, shop, eat and move here. We naturally wanted to assist them and our neighbours in any way we could. We are a part of this community and this was an amazing opportunity to be a positive force for change that would benefit everyone in the area,” she states.

Shimizu-Forbes has personally volunteered, in a number of capacities, every year since the first Quadra Village Day. Community Savings



Volunteers from Community Savings (photo by Frans Jonker and Janis La Couvée)

has donated time, money and personnel through cash sponsorships, purchasing useful items, and volunteer time. In the last few the organization has been totally responsible for the plant pot activity – purchasing plants, pots and potting soil, and organizing the event with volunteer support. Eight Community Savings volunteers (staff and family members) participate in Quadra Village Day.

“We love participating in the event in any way we can. The last few years we have created a children’s planting station. This has gone over very successfully and we always hear such positive feedback that people look forward to the activity each year. We help children make a Mother’s Day card as well since the event is always the Saturday before Mother’s Day. It works well, as the children have an

opportunity to make something to give their mom, parent, or grandparent for FREE. It is such a great feeling, as the children are always so happy and appreciative of our station. It always leaves us feeling overwhelmed with joy that we could put a smile on a child’s face,” says Shimizu-Forbes.

She encourages other prospective sponsors and supporters, “This is a great local event to help spread the word that Quadra Village is a great place to live, work, play, eat and do business in. It is also a great opportunity to get to know your neighbours and the businesses in the area and it’s absolutely FREE!!”

If you would like to learn more about Quadra Village Day sponsorship or volunteering, please contact the Quadra Village Day Planning Committee by email

[quadravillageday@gmail.com](mailto:quadravillageday@gmail.com) or by phone (250) 388-7696.

Community Savings is a Gold Level sponsor. In 2014 over 50 organizations, businesses and individuals helped to sponsor Quadra Village Day. Our Platinum sponsors were:

the Q!, the Zone!, CHEK News, Quadra Village Community Centre, Fairway Market, Island Tents and Events, CDI College and Castle Hardware. Our Gold sponsors were:

Black Press, Play in Victoria, City of Victoria, C.E. Craig and Associates, Island Farms, Cascadia Liquor, Caffè Fantastico, Mike and Shellie Gudgeon, Long & McQuade, Hands On Pottery, Community Savings and 5<sup>th</sup> Street Bar and Wood-Fired Grill.



**KEN'S BARBER SHOP**

OPEN DAILY  
10am-7pm

1406 HILLSIDE AT CEDAR HILL RD  
-PARKING-

MEN'S \$18  
SRs and Students \$15

## The Skills Connect for Immigrants Program

By David Lau, Executive Director, Victoria Immigrant & Refugee Centre Society (VIRCS)

Have you ever wondered what is being done to help professional newcomers who come to Canada to get into careers that help build our economy? For many years, highly skilled immigrants came to Victoria and ended up in jobs that were not always appropriate. This meant they could not contribute maximally to our economy and help us fully develop as a region. It just made no sense that so many trained doctors, engineers and architects were in the service sector. A partnership between the Federal and Provincial Governments created a service called Skills Connect to address this issue. Since its launch there has been tremendous demand in Greater Victoria.

The Skills Connect for Immigrants Program is in its 6th year at Victoria Immigrant and Refugee Centre Society (VIRCS). We have assisted nearly 700 newcomers to Greater Victoria to achieve their professional career goals. Our Employment staff is able to do this amazing work with the support and guidance of ASPECT (Association of Service Providers for Employability and Training) who shepherds this service throughout BC. Thanks to cooperation between the Federal and Provincial Governments and the encouragement of local MPs and MLAs, the program has been extended to the spring of 2016.

The Skills Connect program is targeted to highly educated and trained career professionals, with a high level of English language competency. The vast majority of our clients have post-secondary credentials, including bachelor’s and master’s degrees, and in some cases, doctoral degrees. The program’s clients can access support services and training funds for up to 12 months.

What does this mean? Close to 85% of our clients were able to find employment in our region that fit their back to work plans. It means that the people who are allowed to come to Victoria because of their professions are far more likely to end up helping British Columbians by working in what they are good at. It helps our economy because, generally, they earn a higher taxable income. It is definitely a win/win scenario.

This year, we have rolled out a Mentorship component that matches our clients with volunteers from the business community who provide friendly guidance and advice as our clients start their Canadian careers. This is the grassroots community building that VIRCS is famous for.

If you are a designated professional and are able to lend our clients a helping hand, please contact VIRCS at 250 361-9433 and ask to be referred to Jennifer Almeida, our Skills Connect Program Manager, about mentoring. Things only improve when we come together locally as a community, and you can be part of this exciting process.

**Wanted**  
**Hillside-Quadra**  
**Newspaper**  
**Distribution**  
**Co-ordinator**  
**(Volunteer)**

\*Send out email to group of volunteers when paper is ready  
\*track which volunteers are still active and update the volunteer list when there are changes

Approximate time commitment: 2 hours  
4 times year

Call Kelly at 250-388-7696 or email:  
[kgreenwell@quadravillagecc.com](mailto:kgreenwell@quadravillagecc.com)